

Concept Frame Sample: Pythagorean Relationship - Grade 8

Concept

Pythagorean Relationship

Characteristics

- right angle triangle
- square of hypotenuse is equal to the sum of the squares of the other two sides

Examples

- $c^2 = a^2 + b^2$
- guy wires supporting antenna
- ladder leaning against a wall

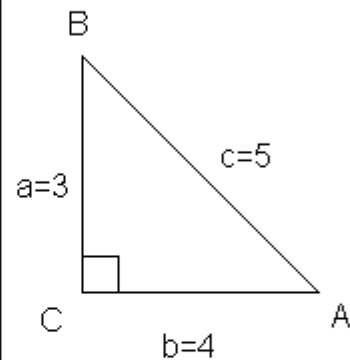
What is it like?

- triangles
- diagonals of a square or rectangle

What is it unlike?

- circle
- equilateral triangle
- parabola
- sphere
- cylinder

Can you illustrate it?



Definition

states that the square of the hypotenuse is always equal to the sum of the squares of the other two sides